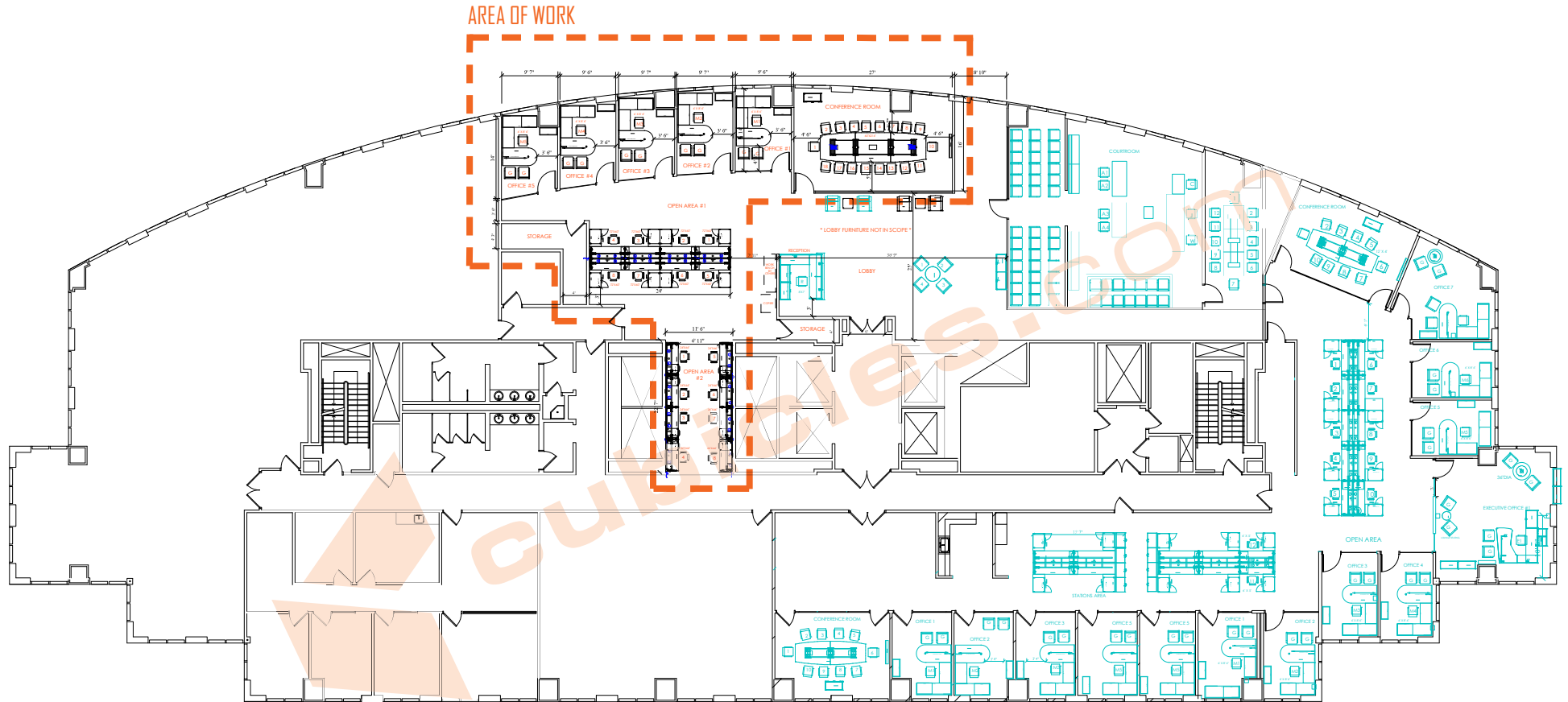


2D OVERALL LAYOUT



- EXISTING FURNITURE
- NEW FURNITURE
- NEW ELECTRICAL ELEMENTS
- NOTES

2D LAYOUT

SCOPE:

OPEN AREA #1

AIS DESKING STATIONS - OXYGEN SYSTEM

- [8] 72"W X 60"D X 29.5"H L-SHAPED POWERED STATIONS W/
- [1] 12"H FROSTED SCREEN / EACH
- [1] COMBO LATERAL UNIT W/ BBF & FF / EACH
- [1] MINI HUTCH EACH

OPEN AREA #2

AIS DESKING STATIONS - OXYGEN SYSTEM

- [8] 66"W X 24"D X 29.5"H POWERED STATIONS W/
- [1] 12"H FROSTED SCREEN / EACH
- [1] BOX-FILE PEDESTAL / EACH
- [1] MINI HUTCH / EACH

OFFICE SUITES #1 #2 #3 #4 & #5

CHERRYMAN AMBER COLLECTION

- [5] 6'X8'-6" U-SHAPED DESKS W/
- [1] COMBO LATERAL UNIT W/ BBF & FF / EACH
- [1] 5 TIER BOOKCASE 36"W x 15"D x 65"H / EACH
- [1] FROSTED MODESTY PANEL / EACH

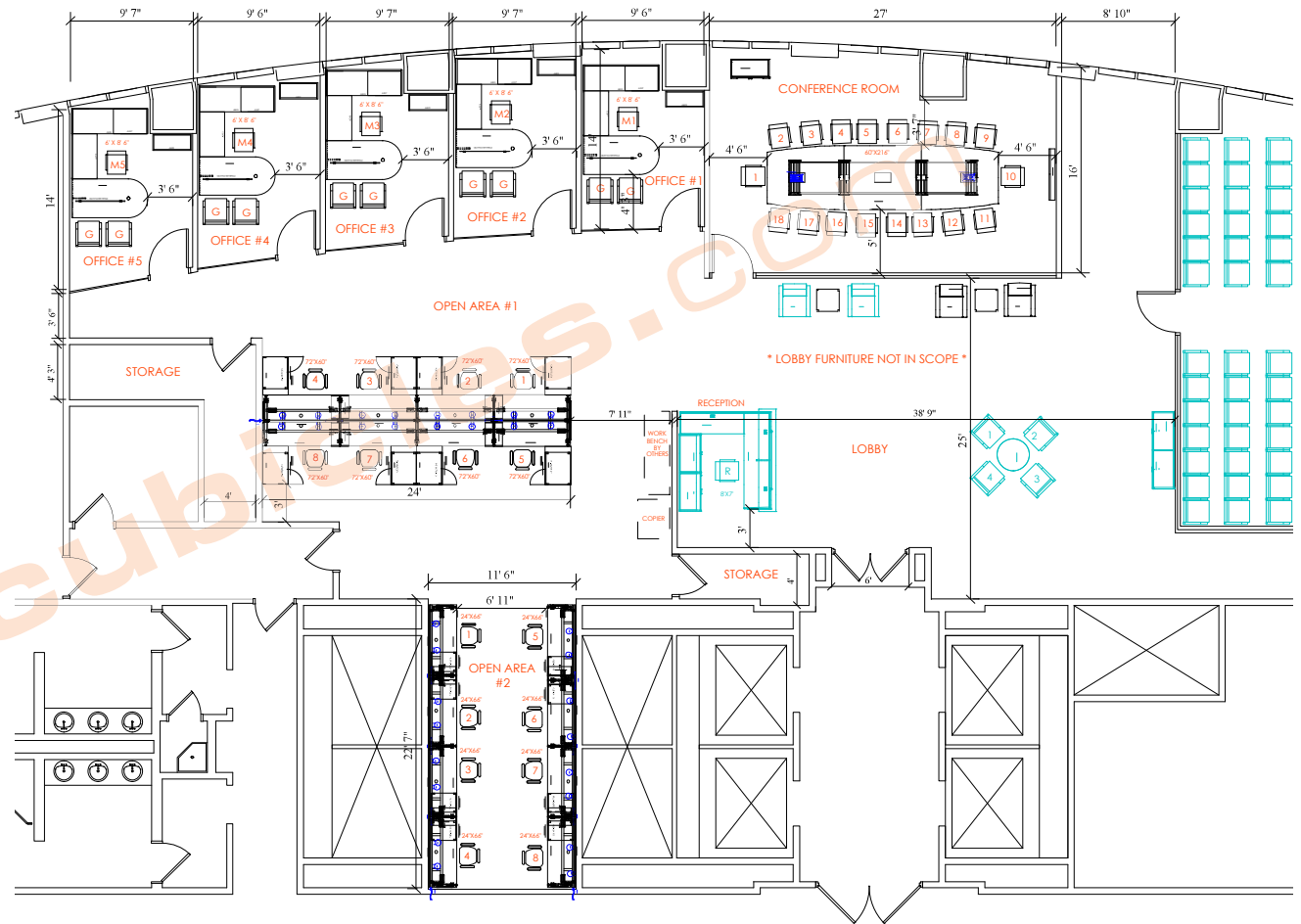
CONFERENCE ROOM

GLOBAL ZIRA COLLECTION

- [1] 216"W X 60"D BOAT SHAPED BOARDROOM TABLE W/
- [2] POWER BOXES
- [1] 40"W X 48"H PRESENTATION CABINET
- [1] 36"W X 18"D X 36"H BUFFET CREDENZA

SEATING

- [16] ROMA TASK CHAIRS - WORKSTATIONS
- [5] VIDN 6332-3 TASK CHAIRS - OFFICE SUITES
- [10] VIDN GUEST CHAIRS - OFFICE SUITES
- [18] ACCORD CHAIRS - CONFERENCE ROOM



- EXISTING FURNITURE
- NEW FURNITURE
- NEW ELECTRICAL ELEMENTS
- NOTES